



HYDRAULIC EXCAVATOR MULCHER

DML/HY 100

MULCHER WITH FIXED TEETH ROTOR FOR EXCAVATORS

Excavator weight between 7 and 13 tonne
*Up to 16 tonne when coupled with 'Hitch n Heel'



FEATURES

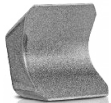
STANDARD EQUIPMENT ON NZ MODELS

'Hitch n Heel' excavator attachment	17/34cc variable manual displacement hydraulic piston motor, with relief and anticavitation valve
Anti dust machine body with enclosed motor	Belt transmission
Rear hood with mechanical adjustment	Protection chains
Front hood with mechanical adjustment	
Welded counter blade	

OPTIONS

Hydraulic hood cylinders
Electric hood control valve
Larger 32/65cc hydraulic motor
Tooth options
Standard hitch

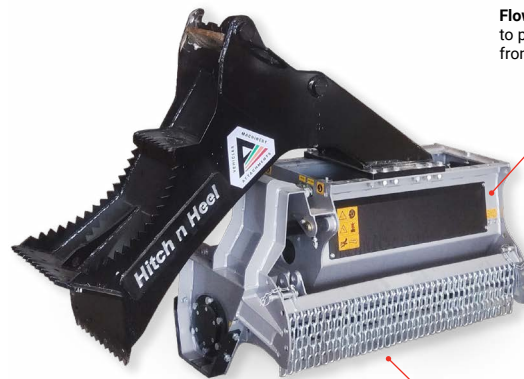
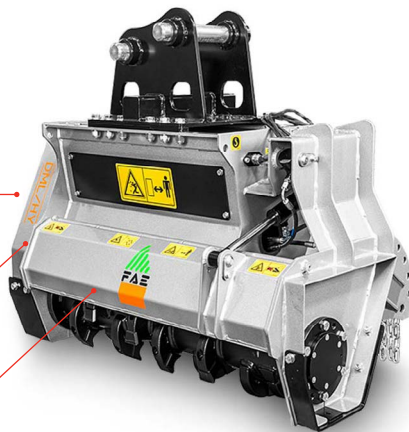
Blade E
Standard



Motor Enclosed Frame perfectly protected from dirt and impact

Steel Counter-Blades helps mulch material into a smaller final size

Optional Hydraulic Rear Hood



Flow Control Valve to protect the motor from excessive flow

Adjustable Front Hood for excellent mulching when operating in either direction. Hydraulic option available.

DML/HY 100	Flow Rate (L/min)		Pressure (bar)		Excavator weight (t.)		Working width (mm)	Weight (kg)	Max shredding diameter (mm)	No. blades (Type E)
	min	max	min	max	min	max				
17/34cc Hydraulic Piston Motor	50	110	180	250	7	16*	1000	490	120	24

Data refers to machine without options

STANDARD MULCHER PACKAGE INCLUDES

- Active VMA 'Hitch n Heel'
- Hydraulic Hose Kit (2x³/₄" , 1x¹/₂")
- Delivery, Custom Hydraulic Motor Setting and Commissioning

